

TOX®-PowerKurve with pneumatic drive

Typ: KK 20

Also available with electric drive!

The TOX®-PowerKurve consists of the base unit, the jaws, the tools and accessories. All these components form the complete unit. The jaws, tools and accessories are matched to your specific requirements. Following are the technical details of the base unit.

Ratings:

Pressing force:
 KK 20 = 20 kN with 100 mm jaw length and max. air pressure: 6 bar

Powerstroke:

KK 20 = 4 mm with 100 mm jaw length
 Limit position damping in cylinder base.
 Min. air pressure: 1 bar
 Weight: approx. 37 kg

Opening angle:

The TOX®-PowerKurve can be ordered directly with a choice of 5 opening angles (30°, 45°, 60°, 75°, 90°).
 Angle variants:

It is also possible to modify an existing TOX®-PowerKurve to a different opening angle by means of distance rings (item 30).

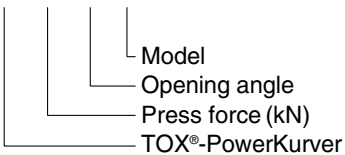
Dismantling is very simple. The 4 tie rods at the back of the cylinder base are removed, allowing the cover with the tube to be taken off and the required rings fitted.

Scope of delivery:

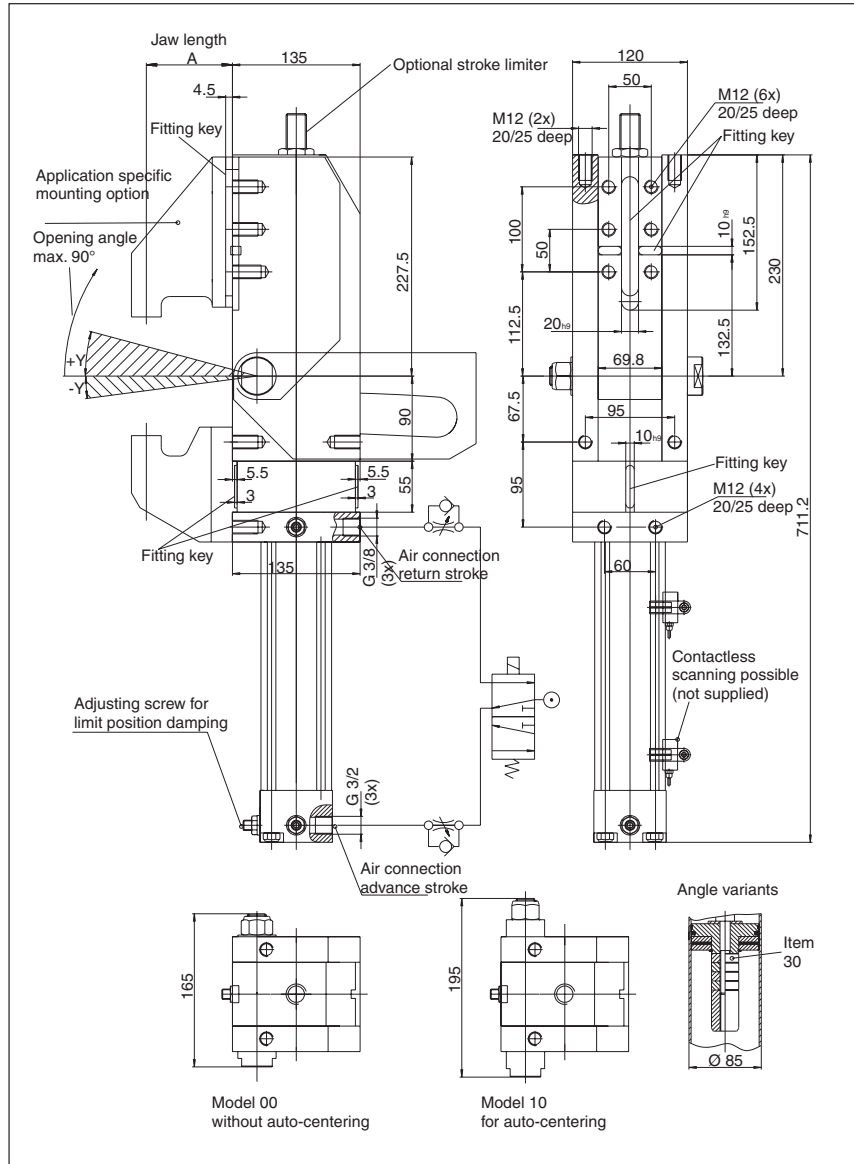
Mounted TOX®-PowerKurve according to order number. Fitting keys according to DIN 6885 are mounted.

Ordering example:

KK 20.090.00



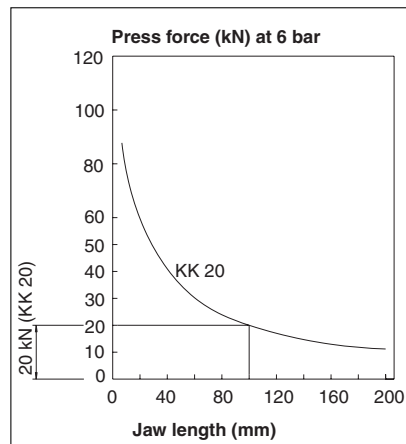
Information on type KK 90 can be found in catalog TOX®-KraftKurve.



Data sheet 70.02

2010/07

Press force
 dependent on jaw length



Power stroke
 dependent on jaw length

